

TX Series

Plastic Injection Molding Machine



TX Series

Plastic Injection Molding Machine



The proven performance that satisfies your productivity, and even beyond your expectation!

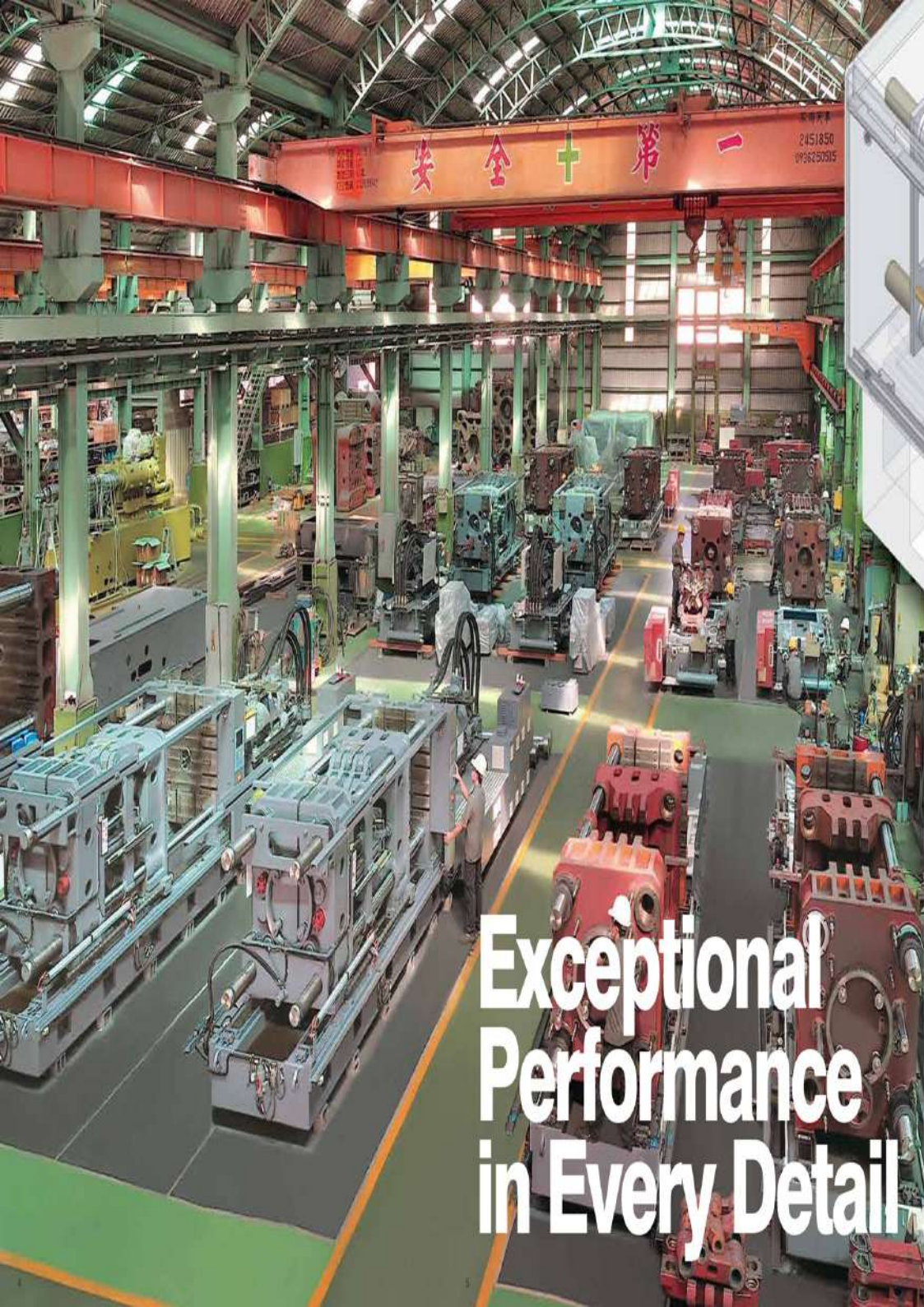
The TX Series plastic injection molding machines feature a new structural design that exhibits high injection speed.



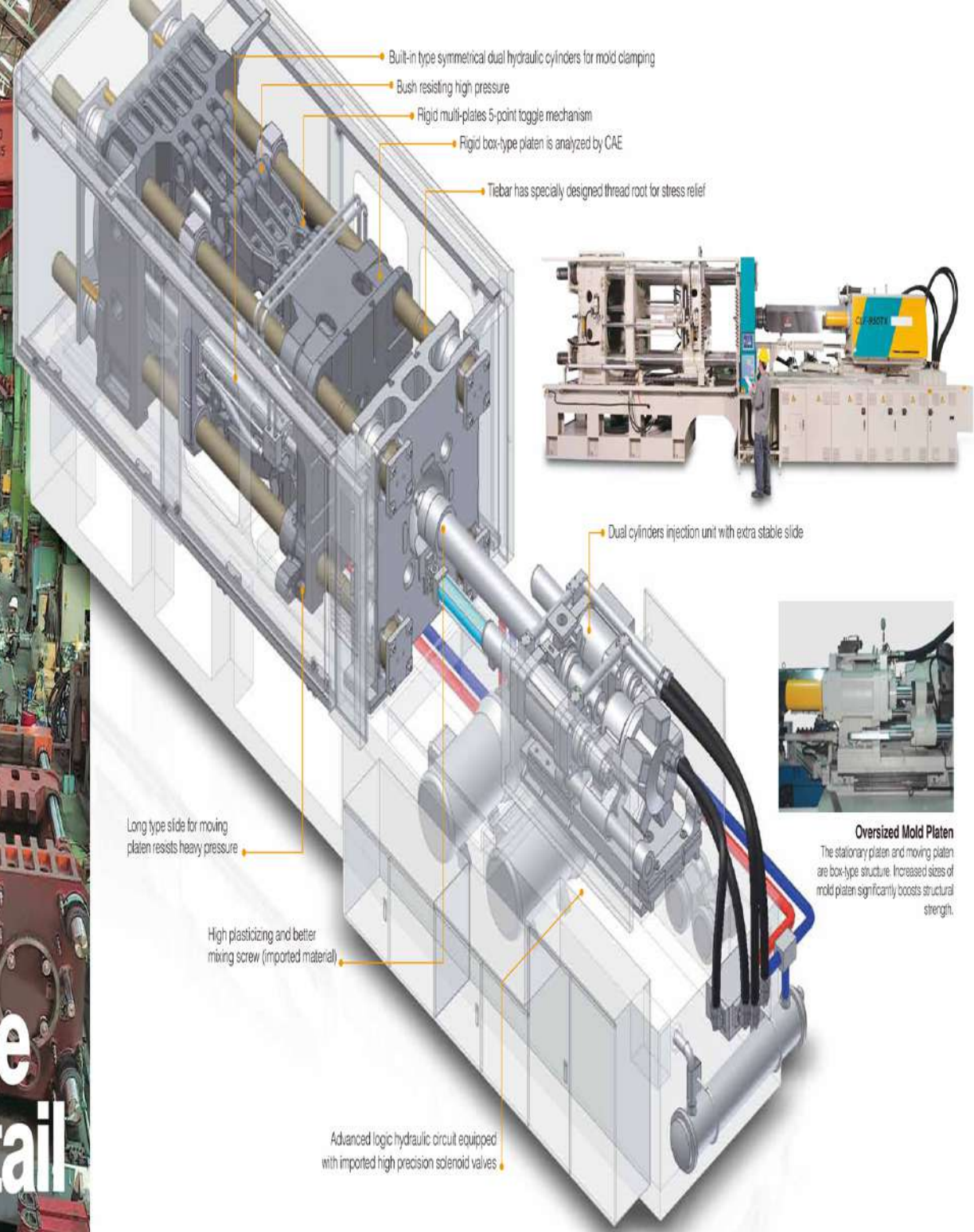
Clamping Force 60~1400 Tons
Injection Speed 100 mm/sec.

Designed with Productivity in Mind.





Exceptional Performance in Every Detail



Oversized Mold Platen
The stationary platen and moving platen are box-type structure. Increased sizes of mold platen significantly boosts structural strength.



Technological Leadership Quality Priority
CLF Pursues Excellence and Everlasting Innovation



QUALITY IN THE DETAIL

CLF's machining shop is fully equipped with various sophisticated machining equipment, allowing us to machine critical parts in house. Our highly experienced machining technicians have outstanding knowledge for part characteristics. They always pay special attention to every detail during machining to ensure the critical parts achieve the highest geometrical accuracy. As a result, CLF injection molding machines are capable of exhibiting unmatched accuracy, performance and durability.

With ultra high precision Japan-made or domestic machine tools such as Toshiba Jig Boring Machine and Kotobuki Double Column Machines, the quality of machine platen, the pitch accuracy of the T-bars holes can be fully controlled in house.

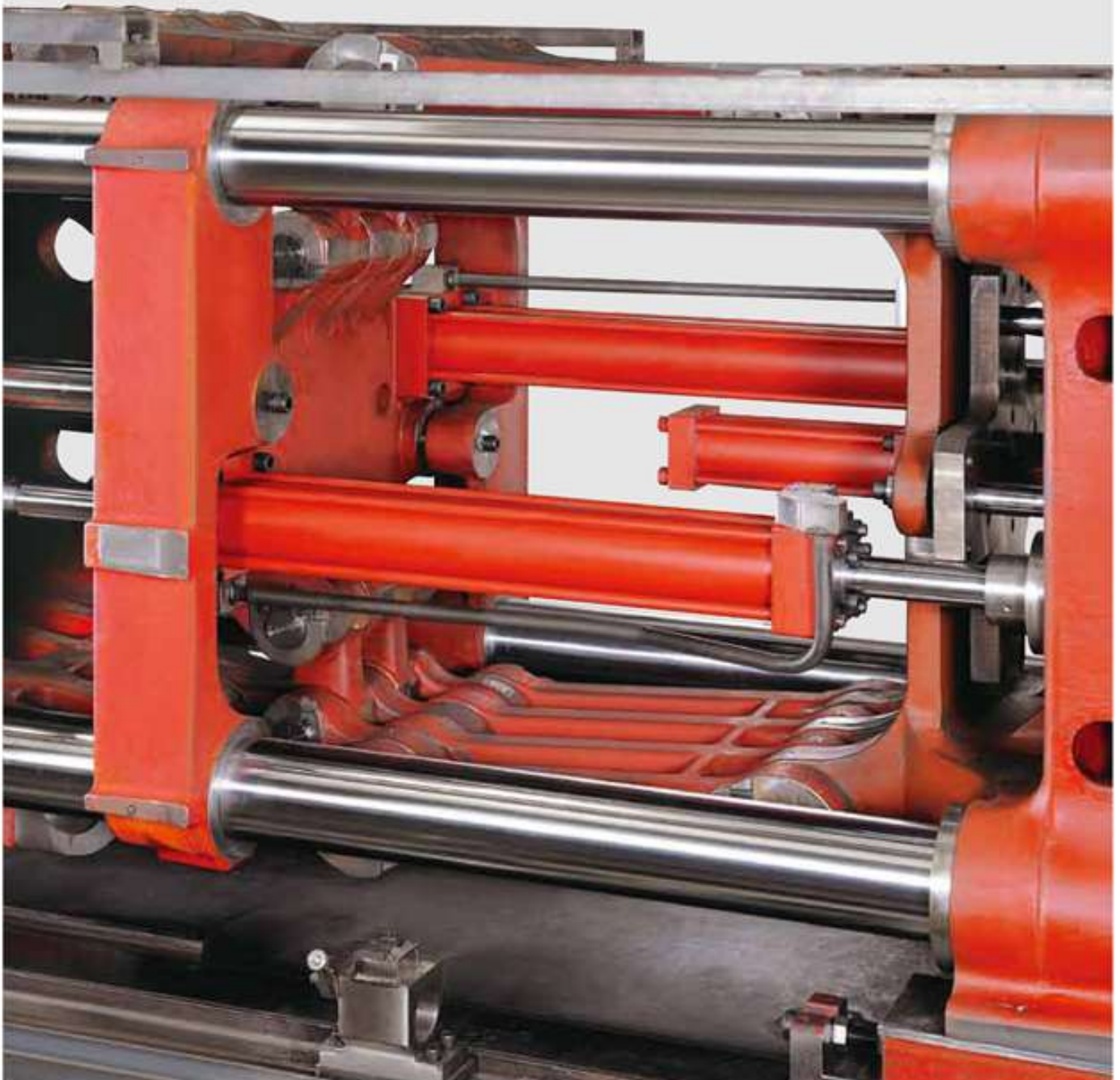


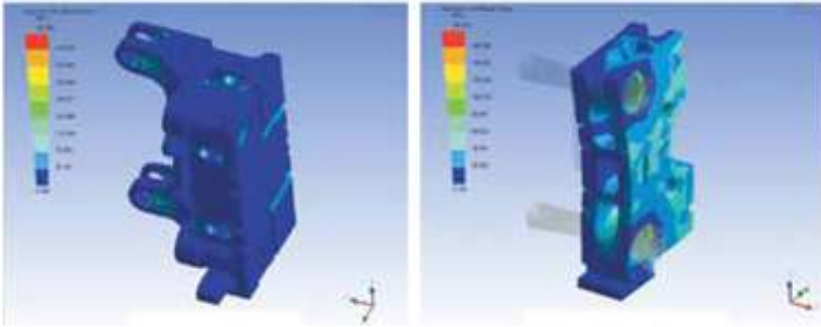
OPTIMIZED CLAMPING MOTION ANALYSIS

Double-cylinder Toggle Mechanism

Five-point Toggle Mechanism

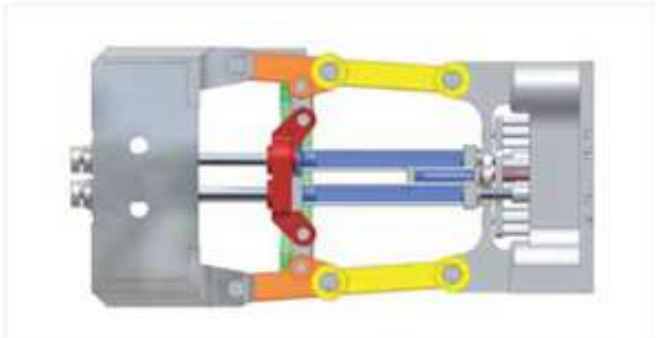
With the specially designed five-point toggle mechanism, faster mold clamping speed can be achieved.





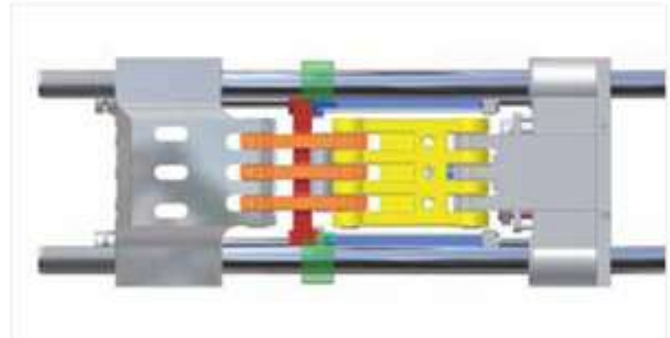
High Stiff Platen Design As A Result of Optimum CAD/CAE Analysis

The latest engineering using CAD/CAE software and Finite Element Analysis (FEA) was applied for the design of the box-structure platen. It features extremely low deformation as well as excellent strength.



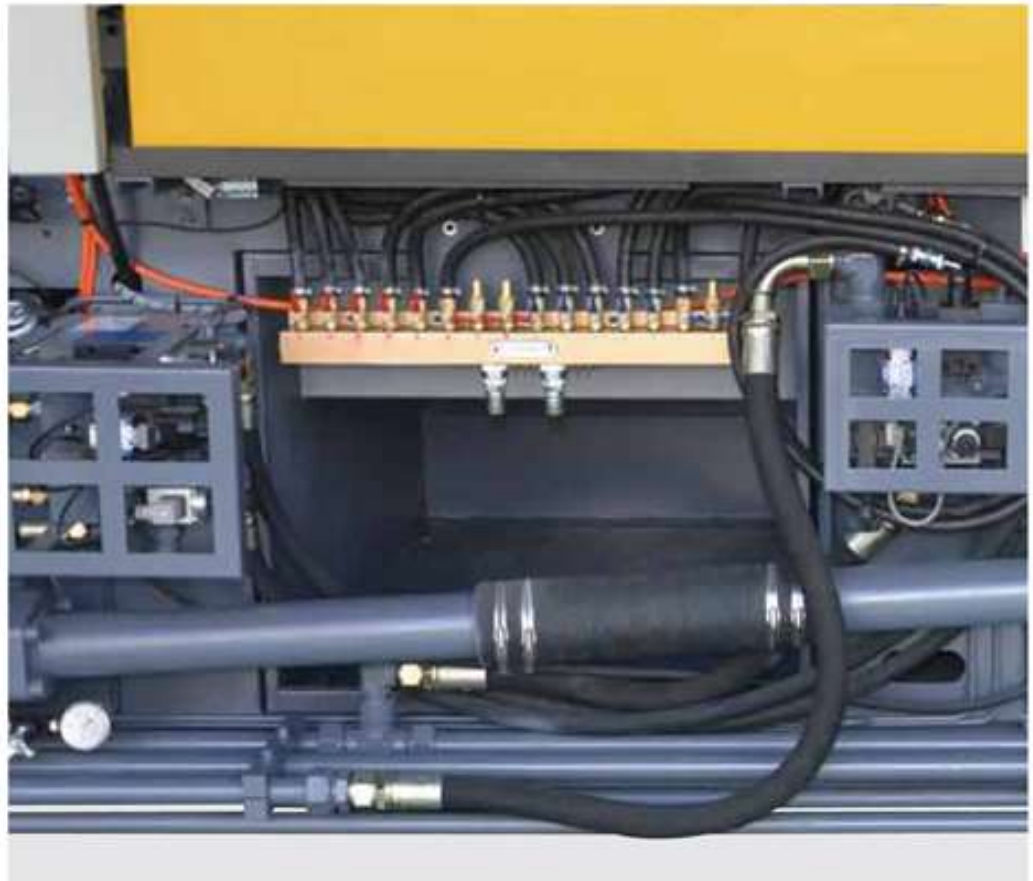
Diagonal Deployment of Hydraulic Cylinders

The clamping cylinders are built-in with diagonal deployment for reducing total length of molding clamping.

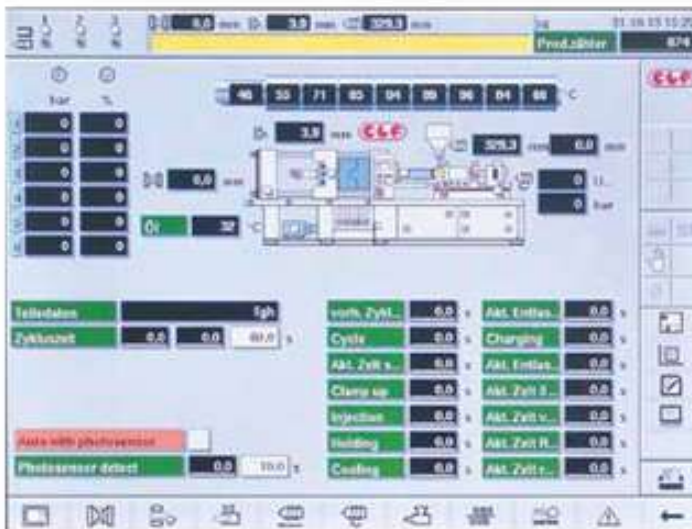


Robust Toggle Deployment

The toggles are connected by 4-3-4-3 plates to achieve maximum strength.



BUILT WITH PASSION FOR ACCURACY



Multi-Language Display

Simply by changing parameters, the language displayed on the monitor may easily shift to Traditional Chinese, Simplified Chinese, English or Spanish...etc.

- KEBA Controller





• Accumulator



Maximum Versatility

The most reliable Performance.

The CLF machines are sophisticated engineered for customers who require maximum productivity with impeccable quality. With numbers of unmatched features such as Pressure Accumulator, Servo Valves, Sealed type Injection Mechanism and so forth, the CLF machines showcase outstanding production capability with high accuracy as well as reliability.



• Servo Electric Material Storage



• Sealed Type Injection Mechanism



• MOOG Servo Valve

User-friendly Control...

The Latest Control Is Easy To Learn And Operate



Controllers Imported from Japan

These Controllers feature a color, LCD display and will enable any operator to perform a multitude of functions. The controller features include 100 sets each of molding parameter setting, data change records and alarm message record, and 45 automatic production "real data" records. Please refer to the controller catalogues for more detailed description of their amazing functions.



MACHINE MODEL		CLF-60TX		CLF-100TX		CLF-120TX		CLF-150TX		CLF-180TX		CLF-230TX		CLF-285TX		CLF-350TX									
INTERNATIONAL CODE		600H-136		1000H-416		1200H-416		1500H-717		1800H-717		2300H-1000		2850H-1470		3500H-1470									
INJECTION UNIT		UNIT																							
Screw Diameter	mm	25	28	30	35	40	30	35	40	40	45	50	40	45	50	45	50	55	50	55	60	55	60	65	
Theoretical Injection Volume	cm ³	54	67	148	202	263	148	202	263	307	389	480	307	389	480	429	530	641	588	712	847	712	847	995	
Injection Pressure	kg/cm ²	2520	2009	2800	2057	1575	2800	2057	1575	2327	1839	1490	2327	1839	1490	2322	1881	1555	2500	2066	1736	2066	1736	1479	
Injection Rate	cm ³ /sec	52	65	79	108	141	79	108	141	131	166	205	131	166	205	162	200	242	175	211	251	211	251	295	
Shot Weight (PS)	gram	49	60	134	182	237	134	182	237	277	351	433	277	351	433	387	478	578	531	643	764	643	764	898	
Screw Rotation	rpm	224		302		302		308		308		308		270		188		188		188		188			
Nozzle Radius	mm	15		15		15		15		15		15		15		15		15		15		15			
No. of Heating Zones	zone	4		6		6		6		6		6		6		6		6		6		6			
Heating Capacity	kw	3.4		4.9		4.9		7.9		7.9		7.9		10		13.9		13.9		13.9		13.9			
CLAMPING UNIT																									
Distance Between Tie Bars (HxV)	mm	315 x 315		390 x 390		420 x 420		460 x 460		510 x 510		560 x 560		610 x 610		670 x 670		670 x 670		670 x 670		670 x 670			
Mold Platen	mm	485 x 485		580 x 580		630 x 630		700 x 700		765 x 765		860 x 860		940 x 940		1000 x 1000		1000 x 1000		1000 x 1000		1000 x 1000			
Mold Height	mm	100 - 320		150 - 400		150 - 450		150 - 500		150 - 550		200 - 600		200 - 650		200 - 700		200 - 700		200 - 700		200 - 700			
Die Opening Stroke	mm	280		360		420		460		500		560		610		680		680		680		680			
Clamping Force	ton (kn)	60 (600)		100 (1000)		120 (1200)		150 (1500)		180 (1800)		230 (2300)		285 (2850)		350 (3500)		350 (3500)		350 (3500)		350 (3500)			
Dia. of Centering Ring	mm	100		100		125		125		160		160		160		160		160		160		160			
Ejector Stroke	mm	60		95		110		110		150		150		150		200		200		200		200			
Ejecting Force	ton (kn)	2.7 (27)		5.4 (53)		5.4 (53)		5.4 (53)		5.4 (53)		5.4 (53)		6.2 (61)		6.2 (61)		6.2 (61)		6.2 (61)		6.2 (61)			
GENERAL DATA																									
Pump Driving Motor	hp (kw)	15 (11)		25 (18.5)		25 (18.5)		30 (22)		30 (22)		40 (30)		50 (37)		50 (37)		50 (37)		50 (37)		50 (37)			
Oil Tank Capacity	liter	270		434		434		500		500		550		800		800		800		800		800			
Machine Size(L x W x H)	m	3.3 x 1.5 x 1.6		4.75 x 1.27 x 1.73		4.8 x 1.54 x 1.7		5 x 1.54 x 1.8		5.2 x 1.54 x 1.9		6 x 1.62 x 2.0		6.8 x 1.75 x 2.1		7.0 x 1.78 x 2.1		7.0 x 1.78 x 2.1		7.0 x 1.78 x 2.1		7.0 x 1.78 x 2.1			
Net Weight	ton	3.7		4.5		5.3		6.5		7.7		10		12		15		15		15		15			

* All specifications, dimensions and design characteristics shown in this catalogue are subject to change without notice.

Technological Leadership Quality Priority

CLF Pursues Excellence and Everlasting Innovation

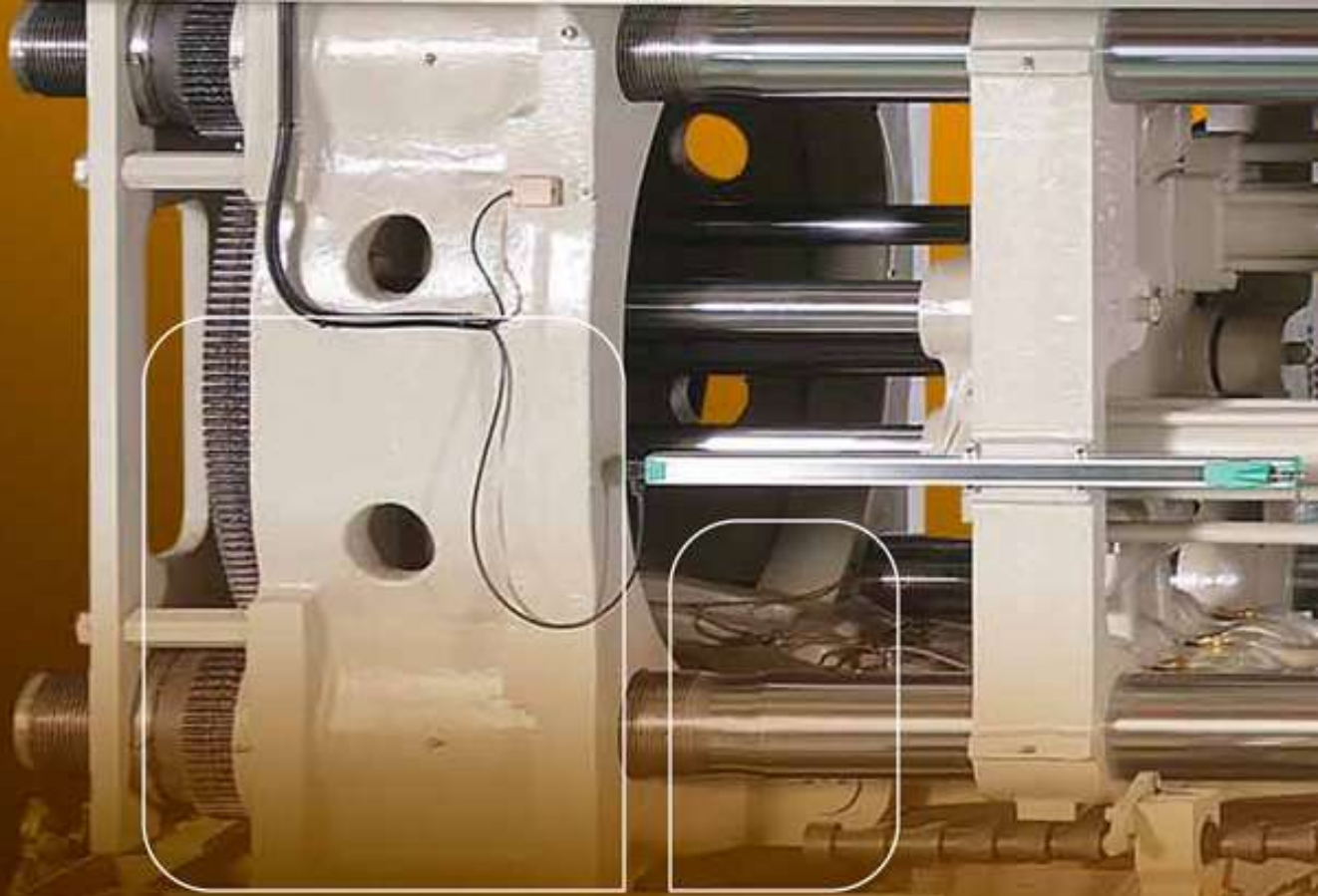
CLF Plastic Injection Molding Machines

Your No. 1 Choice for Any Injection Molding Application



MACHINE MODEL		CLF-400TX			CLF-500TX			CLF-600TX			CLF-750TX			CLF-950TX			CLF-1200TX			CLF-1400TX	
INTERNATIONAL CODE		4000H-2436			5000H-2436			6000H-4183			7500H-4183			9500H-6630			12000H-6630			14000H-11285	
INJECTION UNIT	UNIT																				
Screw Diameter	mm	65	70	75	70	75	80	75	80	85	80	85	90	95	100	105	95	100	105	110	120
Theoretical Injection Volume	cm ³	1095	1269	1457	1269	1457	1658	1876	2135	2410	2135	2410	2702	3542	3925	4327	3542	3925	4327	5462	6500
Injection Pressure	kg/cm ²	2226	1920	1672	1920	1672	1470	2229	1960	1736	1960	1736	1548	1872	1690	1532	1872	1690	1532	2066	1736
Injection Rate	cm ³ /sec	322	373	428	373	428	487	393	447	505	447	505	566	687	762	840	687	762	840	893	1063
Shot Weight (PS)	gram	988	1145	1315	1145	1315	1496	1693	1927	2175	1927	2175	2440	3197	3542	3905	3197	3542	3905	4929	5866
Screw Rotation	rpm	223		223		148		148		170		170		170		170		170		170	
Nozzle Radius	mm	15		15		15		15		15		15		15		15		15		15	
No. of Heating Zones	zone	8		8		9		9		10		10		10		10		10		12	
Heating Capacity	kw	16.5		16.5		30		30		41.5		41.5		41.5		41.5		41.5		52.5	
CLAMPING UNIT																					
Distance Between Tie Bars (HxV)	mm	730 x 730			810 x 810			910 x 910			960 x 960			1120 x 1120			1250 x 1250			1450 x 1450	
Mold Platen	mm	1120 x 1120			1260 x 1260			1390 x 1390			1480 x 1480			1720 x 1720			1900 x 1900			2170 x 2170	
Mold Height	mm	250 - 750		300 - 900		300 - 1000		350 - 1100		400 - 1200		400 - 1300		400 - 1300		400 - 1400		400 - 1400		400 - 1400	
Die Opening Stroke	mm	750		800		900		1000		1200		1300		1520		1520		1520		1520	
Clamping Force	ton (kn)	400 (4000)		500 (5000)		600 (6000)		750 (7500)		950 (9500)		1200 (12000)		1400 (14000)		1400 (14000)		1400 (14000)		1400 (14000)	
Dia. of Centering Ring	mm	160		200		200		200		250		250		250		250		250		250	
Ejector Stroke	mm	200		200		250		300		300		300		300		300		300		300	
Ejecting Force	ton (kn)	7 (69)		11 (108)		13.3 (130)		13.3 (130)		26.6 (260)		26.6 (260)		26.6 (260)		26.6 (260)		26.6 (260)		26.6 (260)	
GENERAL DATA																					
Pump Driving Motor	hp (kw)	75 (56)		75 (56)		100(75)		100(75)		135(100)		135 (100)		195 (146)		195 (146)		195 (146)		195 (146)	
Oil Tank Capacity	liter	1100		1100		1450		1450		2100		2100		3000		3000		3000		3000	
Machine Size(L x W x H)	m	7.8 x 1.8 x 2.2		8.2 x 1.95 x 2.2		9.1 x 2.2 x 2.2		9.6 x 2.25 x 2.3		11.5 x 2.6 x 2.6		12 x 3.0 x 2.8		13.7 x 3.2 x 3.1		13.7 x 3.2 x 3.1		13.7 x 3.2 x 3.1		13.7 x 3.2 x 3.1	
Net Weight	ton	20.5		25		36.5		40		56		75		110		110		110		110	

* All specifications, dimensions and design characteristics shown in this catalogue are subject to change without notice.



CHUAN LIH FA MACHINERY WORKS CO., LTD.

No. 17, Lane 360, Chung Cheng S. RD.

Yuen-kang Dist. Tainan City 71047, Taiwan

Tel: +886-6-253-2111 Fax: +886-6-253-3311, 254-8859

<http://www.clf.com.tw> E-mail: clf@clf.com.tw

NO. 68, LN. 169, Sec 2, Guanxin Rd, Guanmiao Dist,
Tainan City 71841, Taiwan

Tel: +886-6-595-8133 Fax: +886-6-595-8130

ZHONG-SHAN CHUAN LIH FA MACHINERY CO., LTD.

No. 3, Nan-Tou Blvd., Nan-Tou Town, Zhong-Shan

City, Guang-Dong Province 528427, China

Tel: +86-760-311-6801~5 Fax: +86-760-311-6806

HUA-DONG CHUAN LIH FA MACHINERY CO., LTD.

2Nd Unit, No. 2, Hsin Pu Rd, Hsin County,

Kwen Shan City, Jiang Xue Province, China

Tel: +86-512-8616-3268 Fax: +86-512-8616-3278



CHUAN LIH FA

